



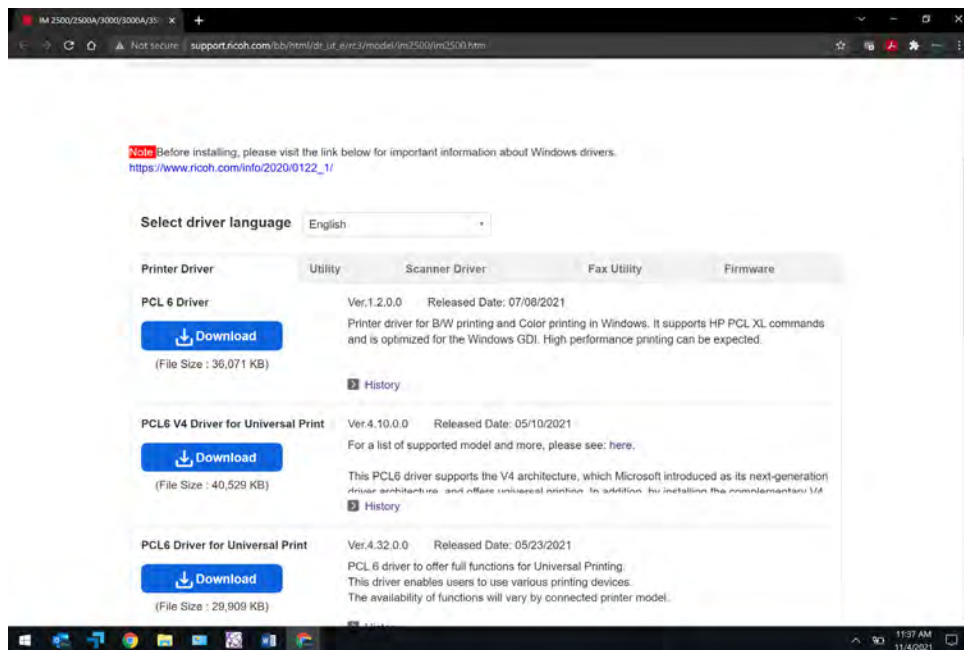
# NASHVILLE SCHOOL of LAW

EDUCATING TENNESSEE'S LAWYERS SINCE 1911

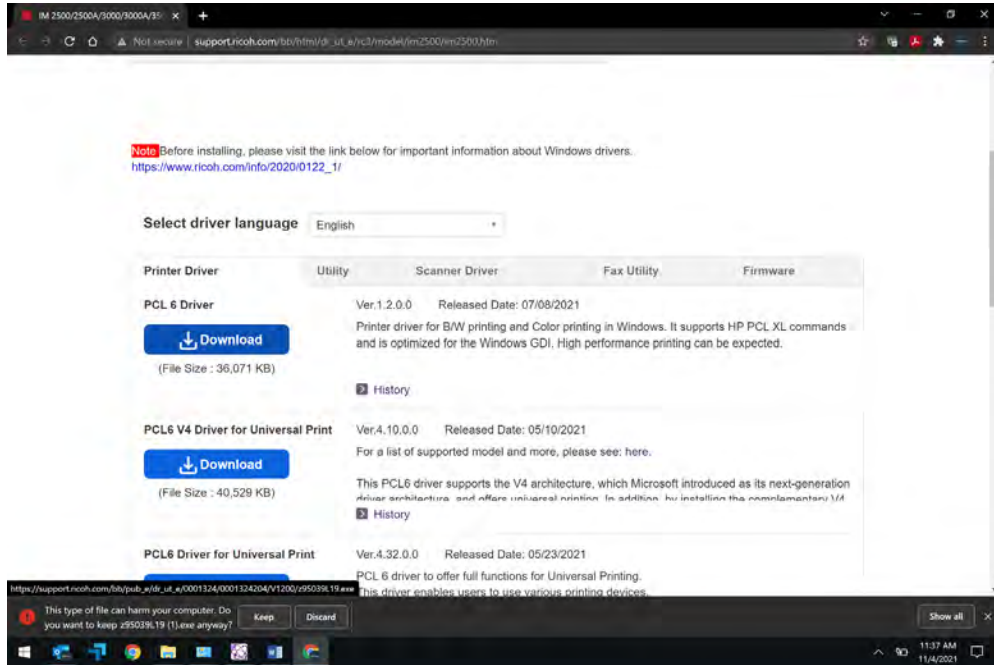
## Instructions to Connect to NSL Library Printer

(PC only – Mac devices connect automatically)

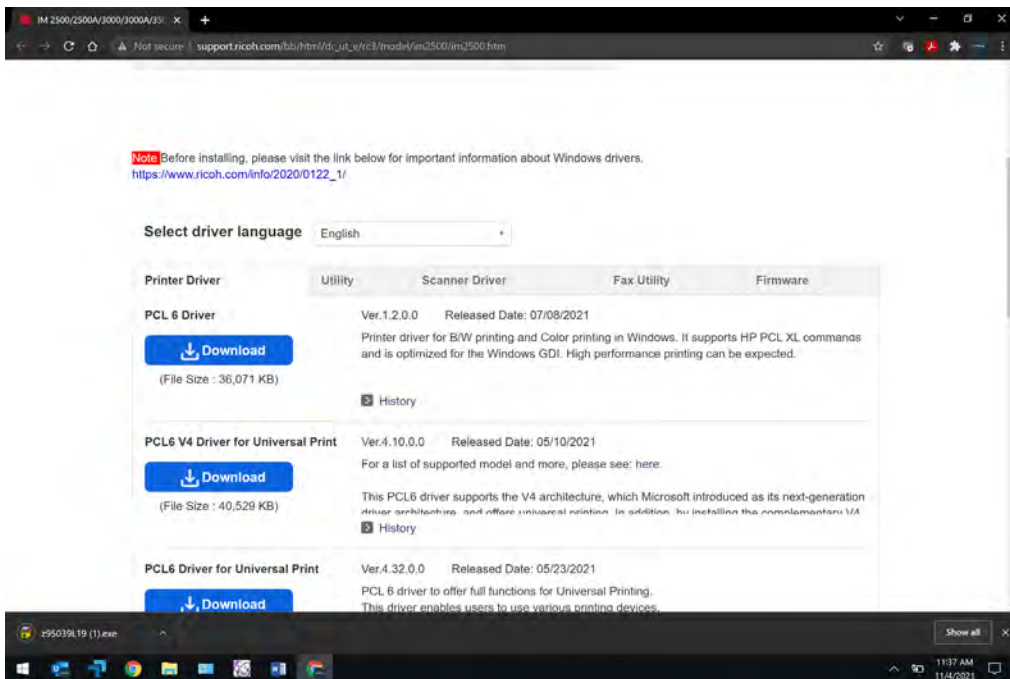
Click the link for Ricoh driver website: [http://support.ricoh.com/bb/html/dr\\_ut\\_e/rc3/model/im2500/im2500.htm](http://support.ricoh.com/bb/html/dr_ut_e/rc3/model/im2500/im2500.htm)



Click on PCL 6 Download



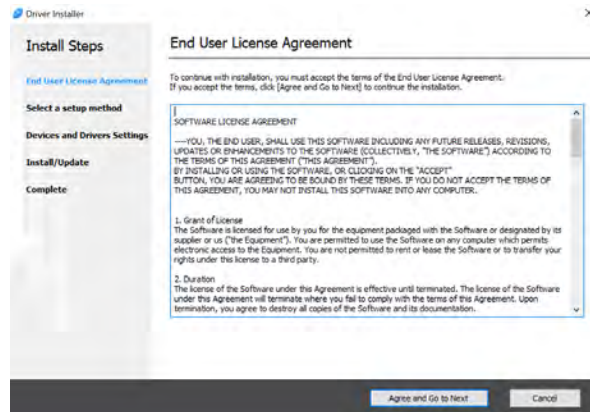
Click on Keep



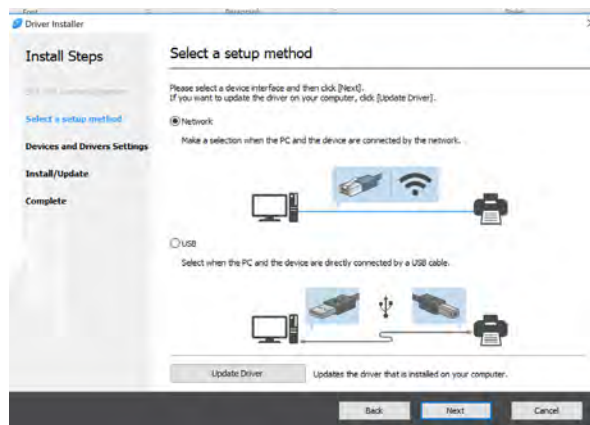
Click the file to run



Click Yes



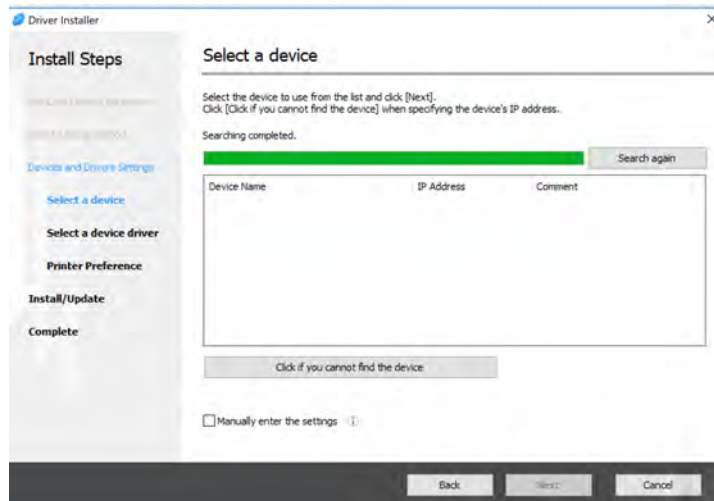
Click Agree and GO to Next



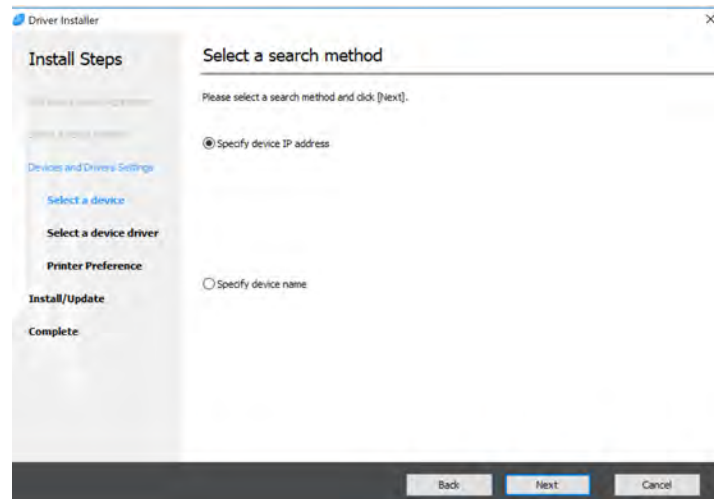
Leave Network selected and click Next



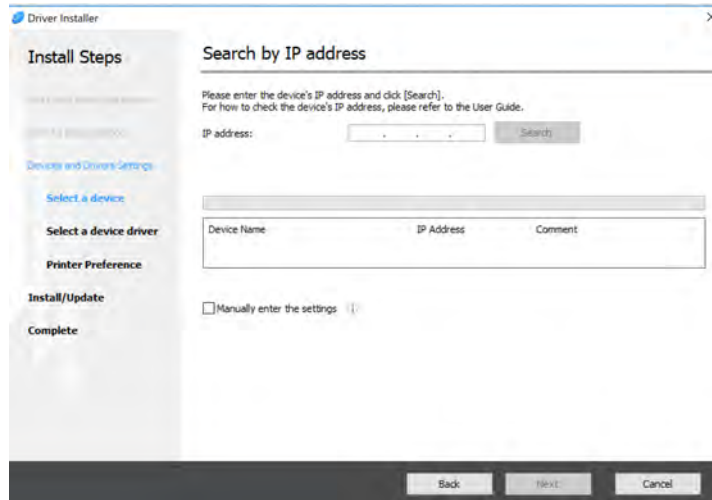
Click OK



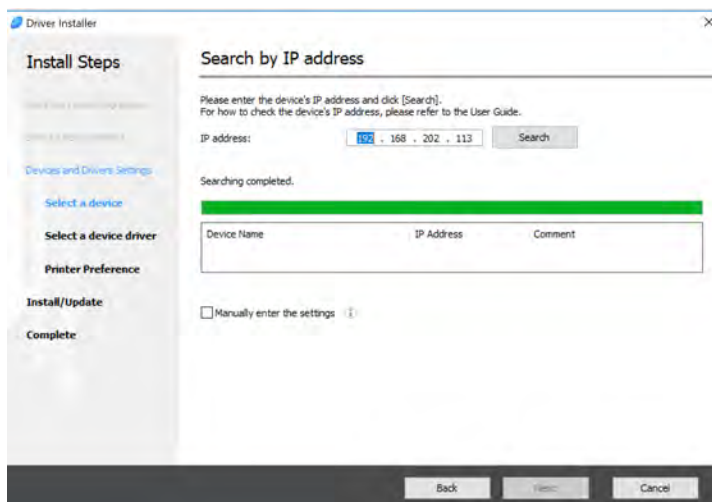
Click the Button "Click if you want to find the device"



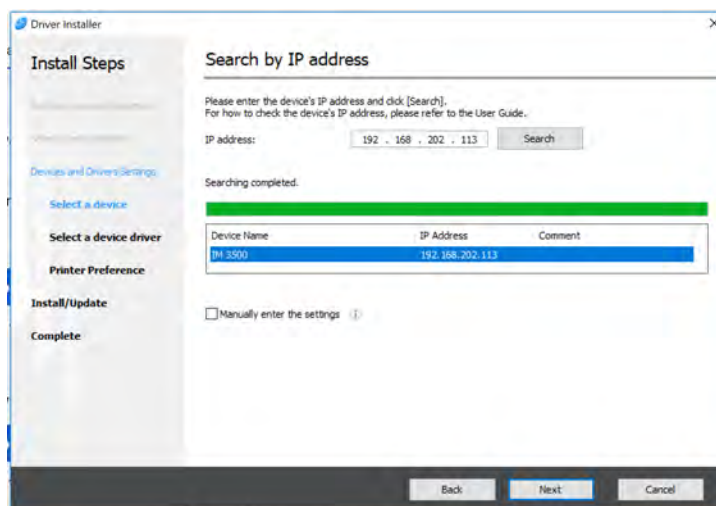
Leave "Specify device IP Address" selected and click Next



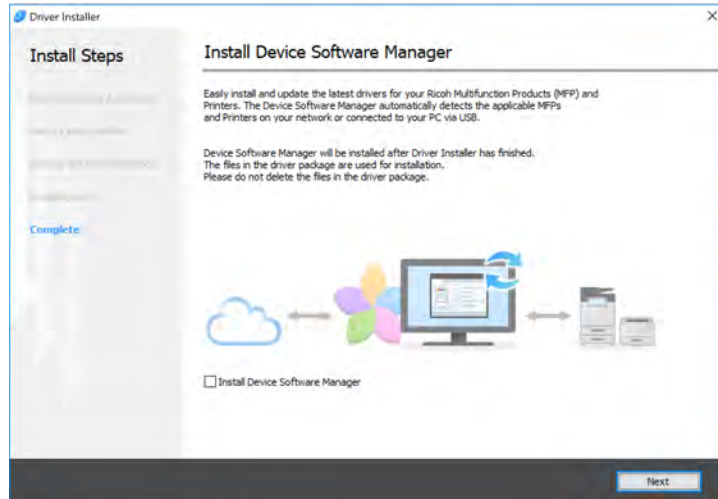
Enter the IP Address: 192.168.202.113



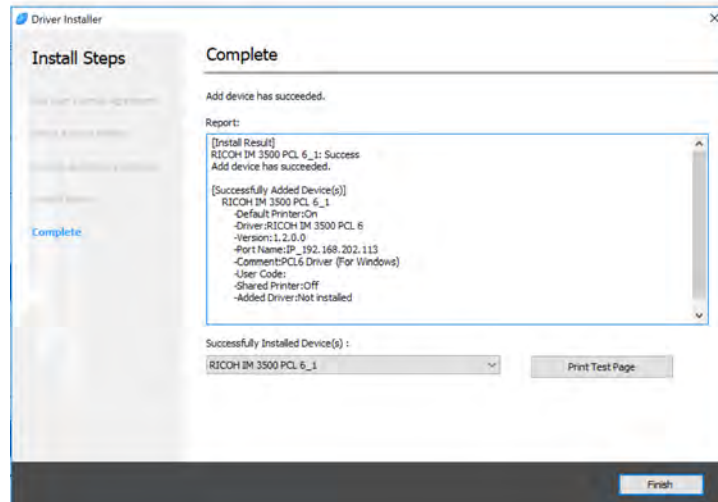
Click Search



Click Next



Click Next



Click Finish